

# CREEKSIDE MANOR

MULTI-SECTION



# About us

Redman Homes is one of the oldest and most respected homebuilders in America. Founded in 1937, Redman pioneered factory home construction and continues to lead advances in quality control, design and home value today. Through experience and innovation we've harnessed production line efficiency and, paired with our high-quality craftsmanship, created a process that delivers homes that meet our superior standards.

## **A place to call your own**

Beyond just building you a house, we're committed to providing you and your family with a home to make memories in that will last a lifetime. Somewhere you can feel secure. A place you can call your own. A home that fits your lifestyle and has your own personal touch. Whether you're an active young family constantly on the go or empty nesters ready to simplify, just relax – we have a home that's right for you.

## **More choice, more freedom**

Our vast selection of floor plans, color choices and options give you the freedom to express your personal style and fit your home around your life.

## **Building the best**

We build each and every home to meet or exceed a strict national or state building code, and we set even higher standards for ourselves. Focusing on the things you don't see as well as the things you do, we monitor and inspect our homes at every stage of construction. From the plumbing system to the electrical wiring, from the kitchen cabinets to the closets in the bedrooms – every home we build undergoes rigorous quality inspections to ensure we're providing you with nothing but our best.

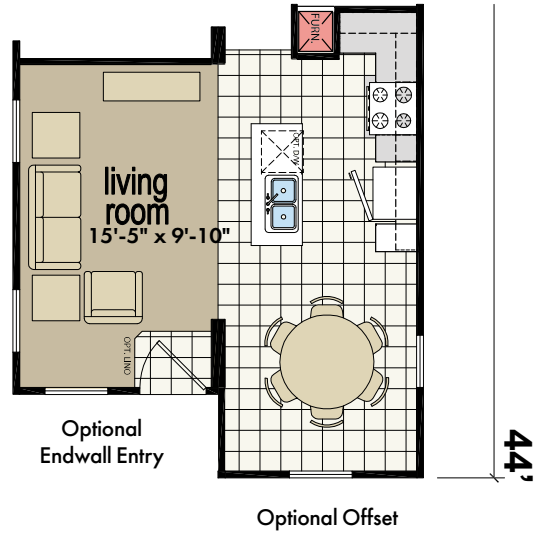
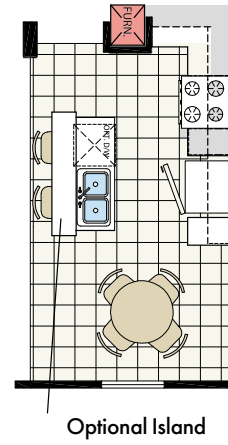
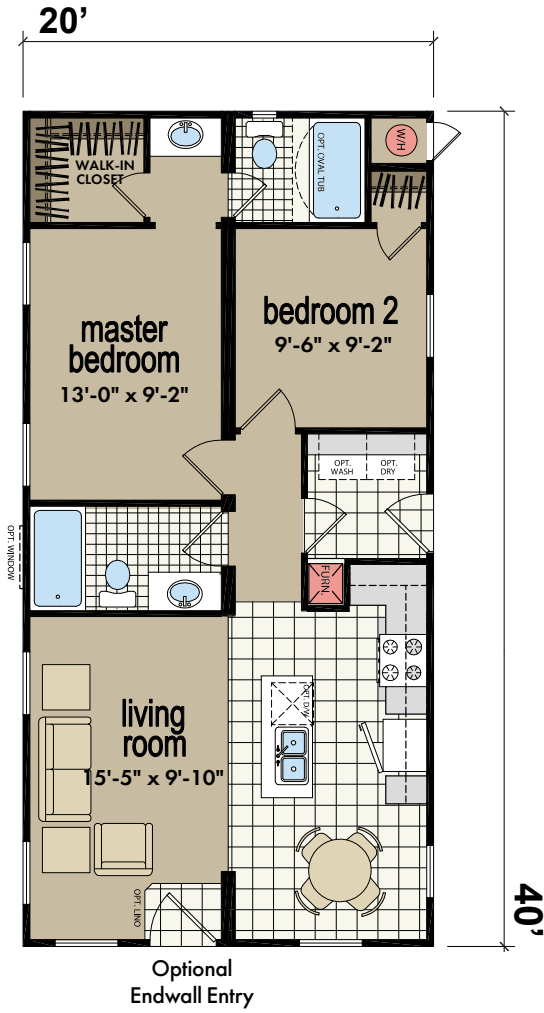
## **The quality you expect**

To build the best, we use the best. To meet your expectations of quality – and ours – we use only the highest-quality building materials and trusted national brand names. From insulation and fixtures to flooring and appliances, we only buy components from suppliers who share our commitment to quality. By using the best, we're confident we can build you a home with the lasting value you'll appreciate for years to come. Your housing consultant can tell you more about the specific brands used in our homes.



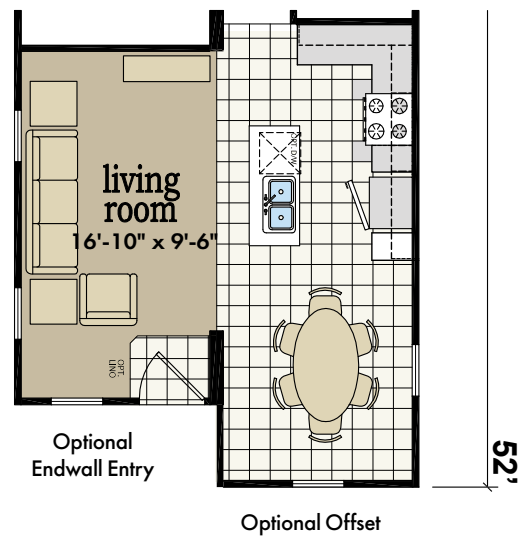
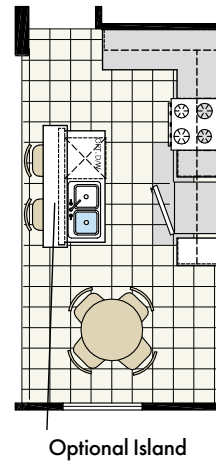
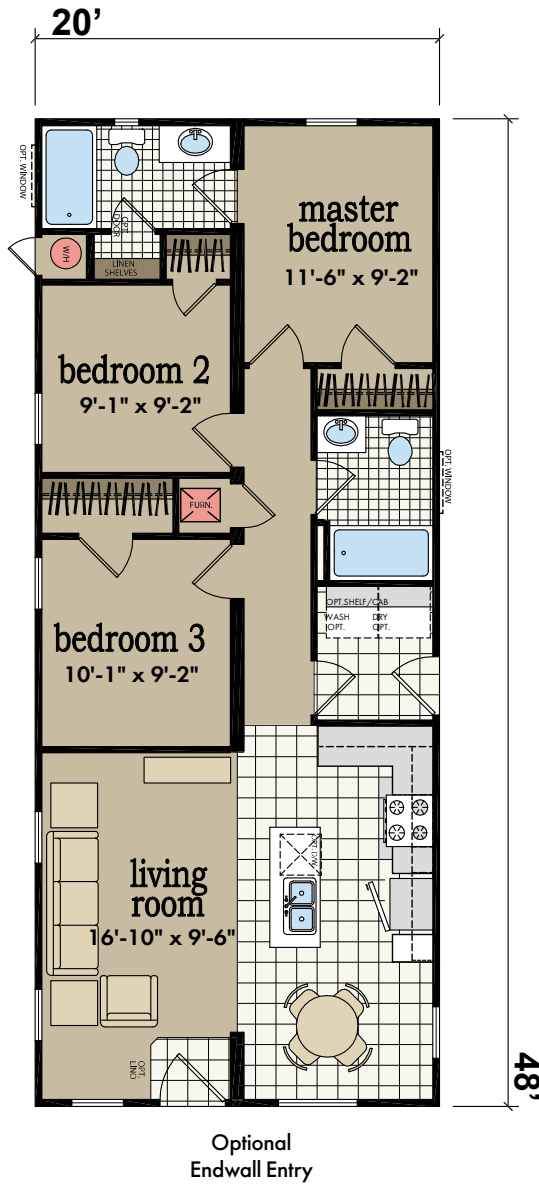
# 8402D

2 Bed-2 Bath  
800 SQ. FT.



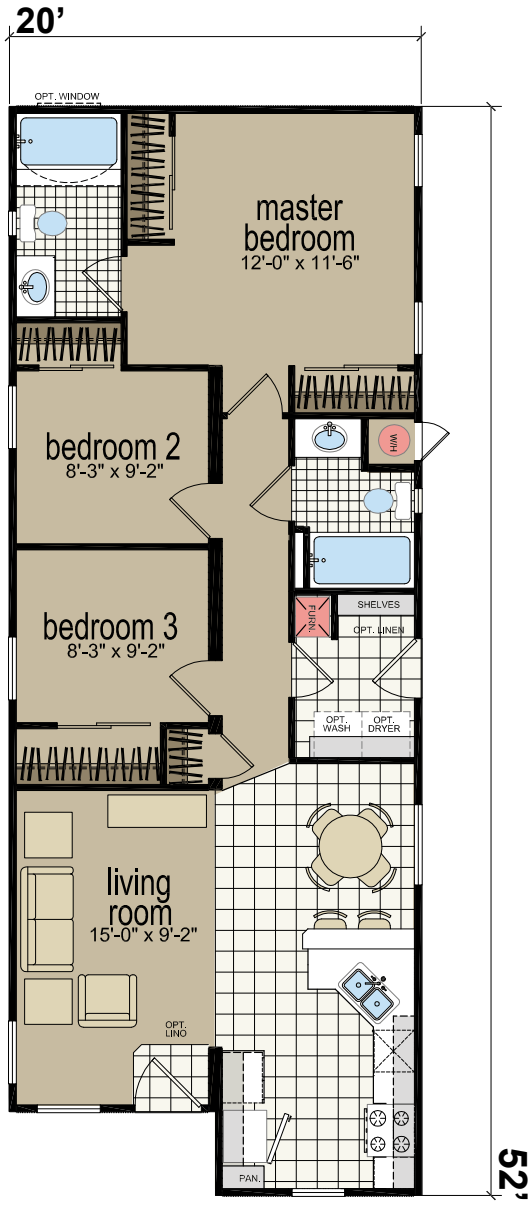
8483D

3 Bed-2 Bath  
960 SQ. FT.



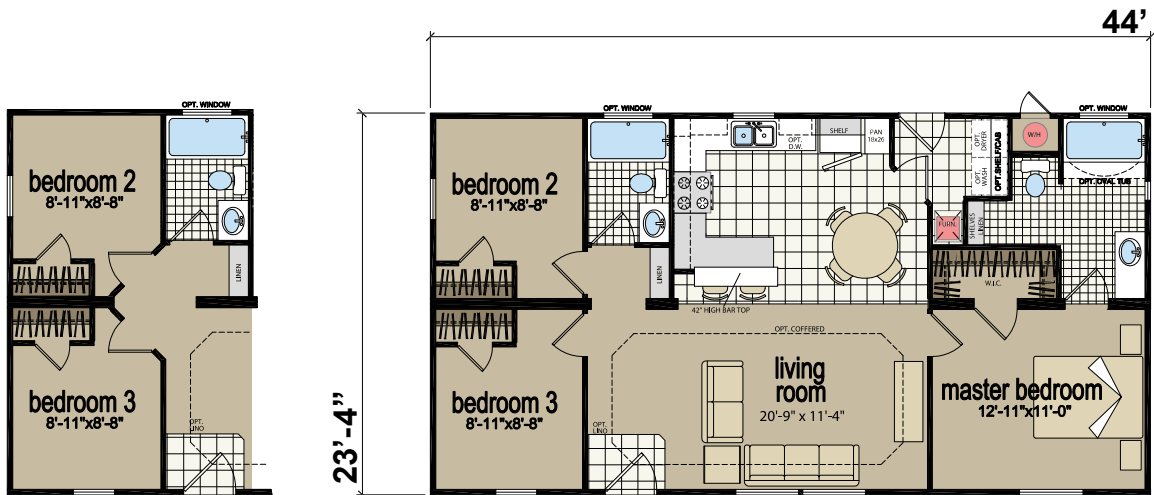
8523K

3 Bed-2 Bath  
1040 SQ. FT.





**3443R** | **3 Bed-2Bath**  
**1027 SQ. FT.**

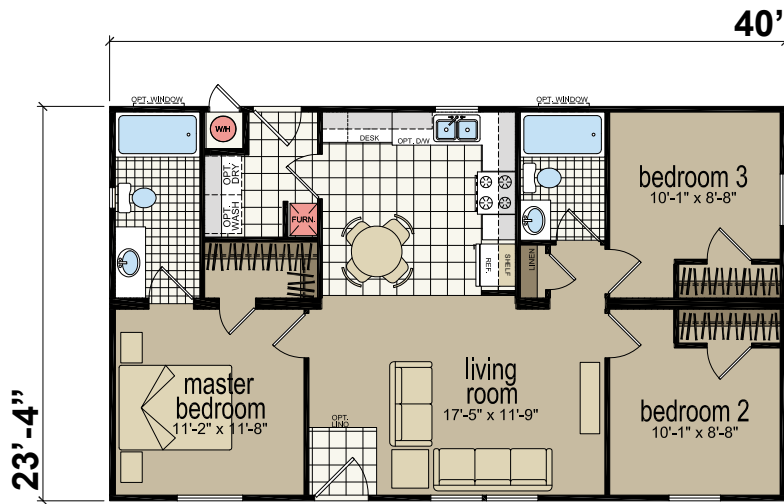


Optional Bedroom Entry



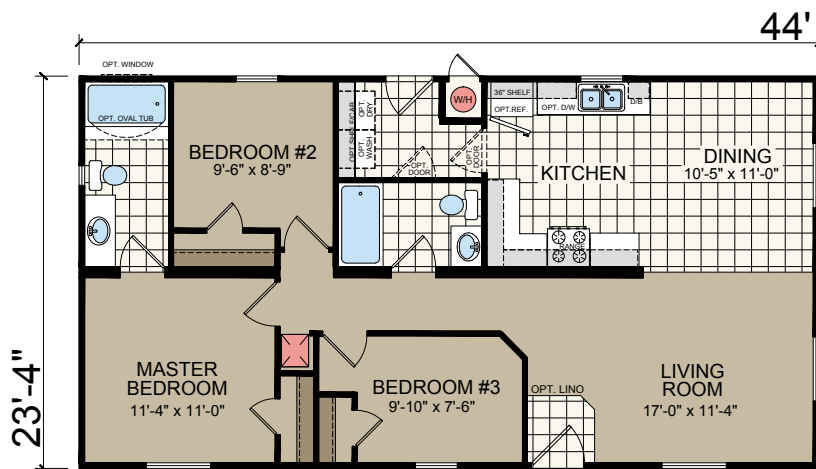
**3403B**

**3 Bed-2Bath**  
933 SQ. FT.



**3443L**

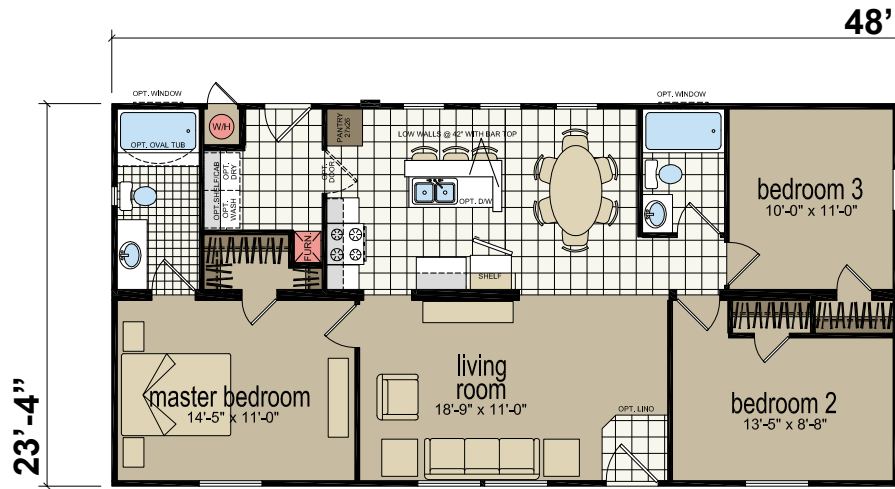
**3 Bed-2Bath**  
1027 SQ. FT.





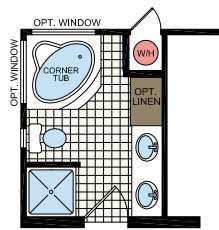
3483B

3 Bed-2 Bath  
1120 SQ. FT.

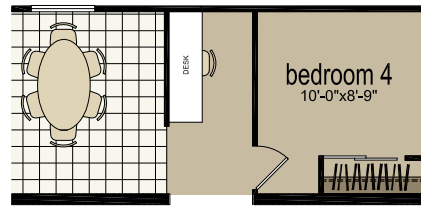


3563F

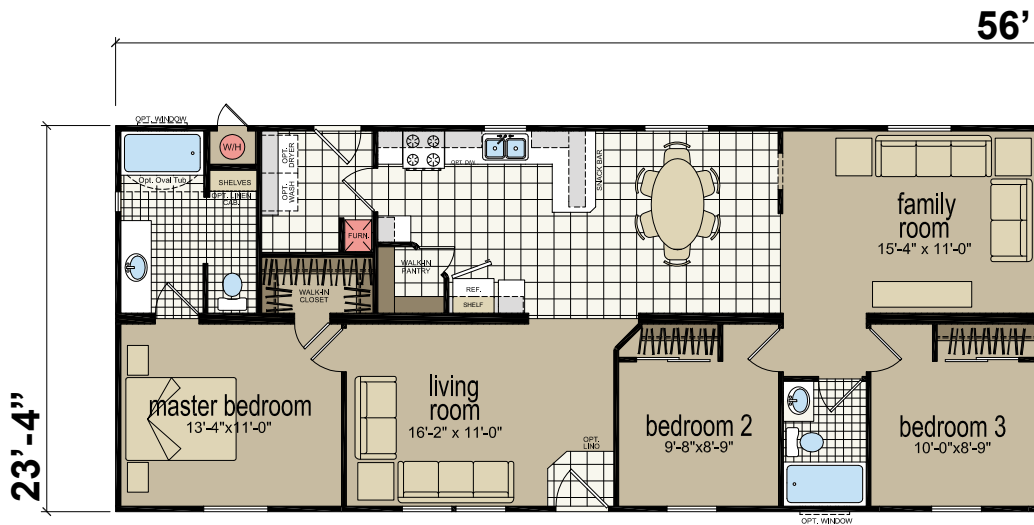
3 Bed-2 Bath  
1306 SQ. FT.



Optional Glamour Bath

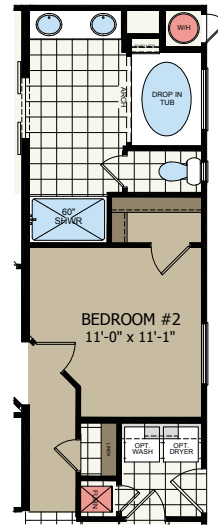
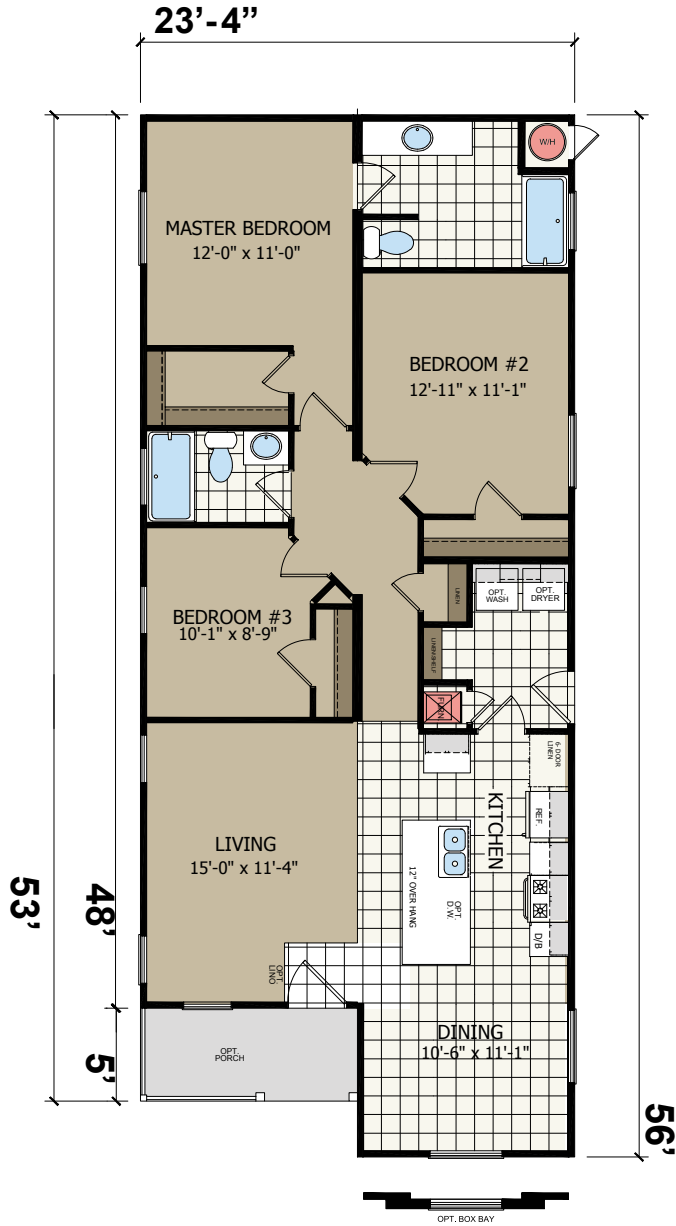


Optional Fourth Bedroom

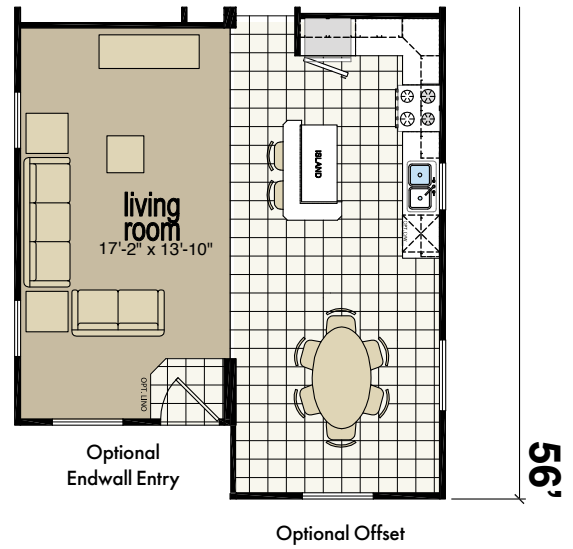
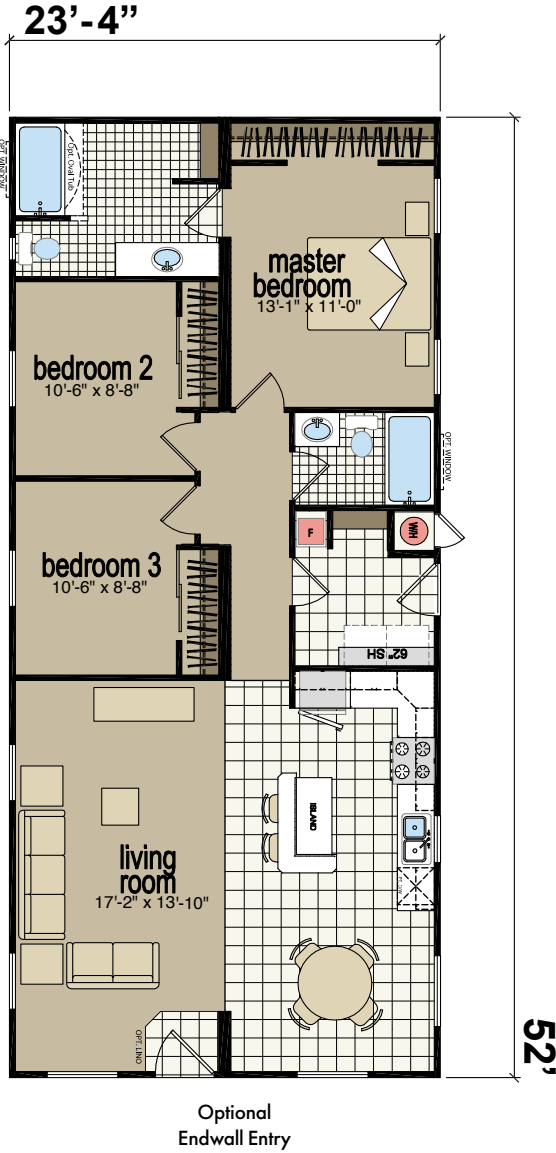


3563D

3 Bed-2 Bath  
1213 SQ. FT.

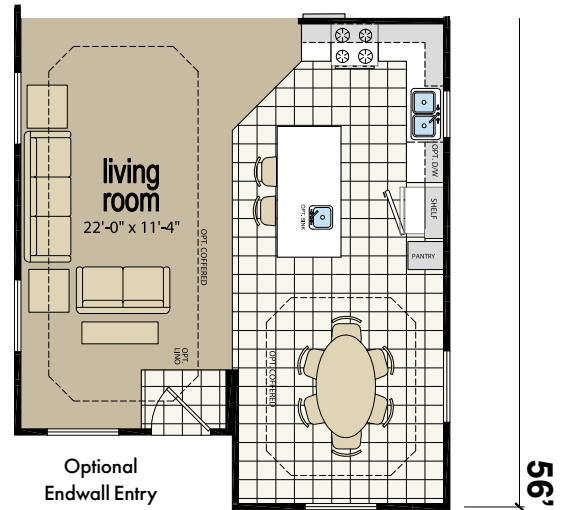
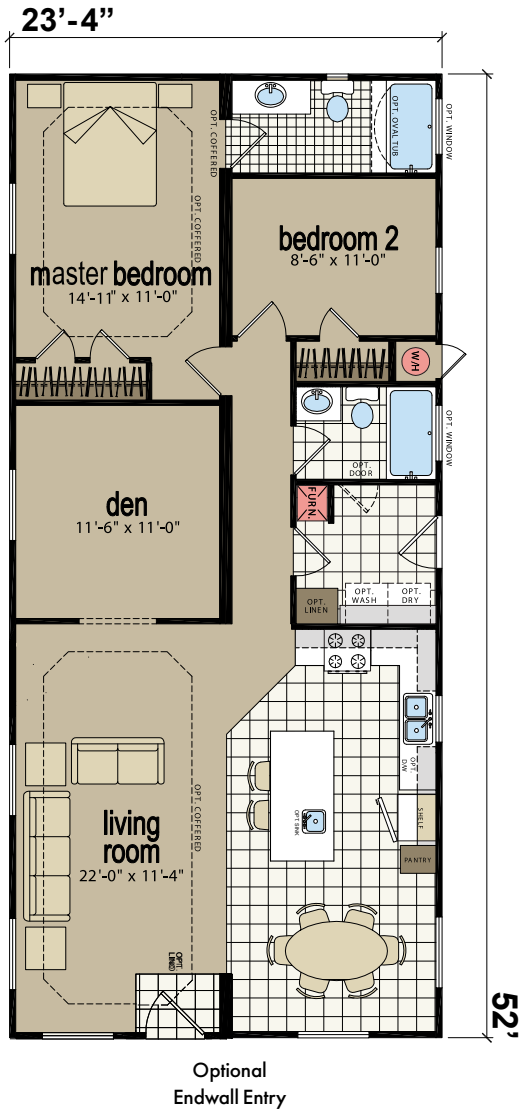


Optional Master Bath



**3522D**

**2 Bed-2 Bath**  
1213 SQ.FT.

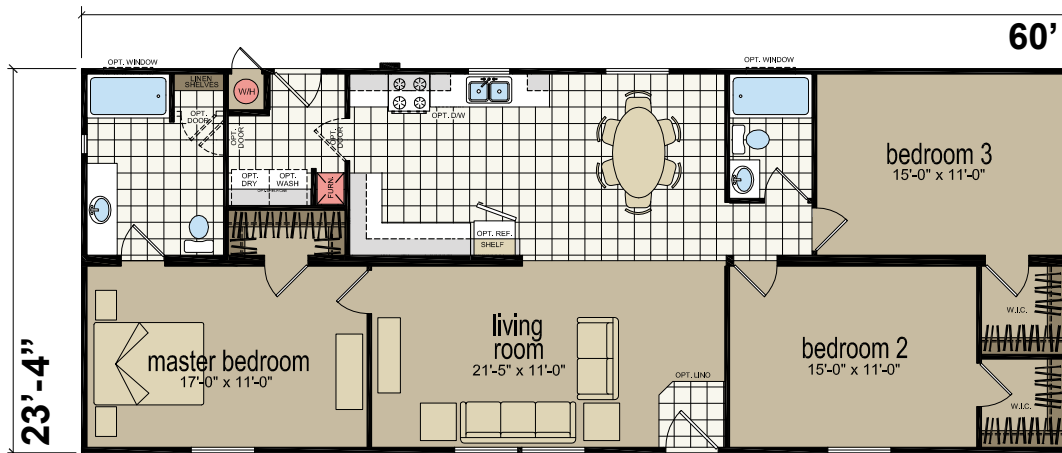
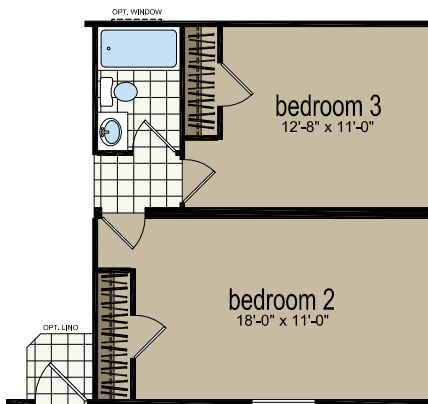
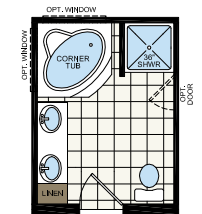




Shown with Optional Exterior

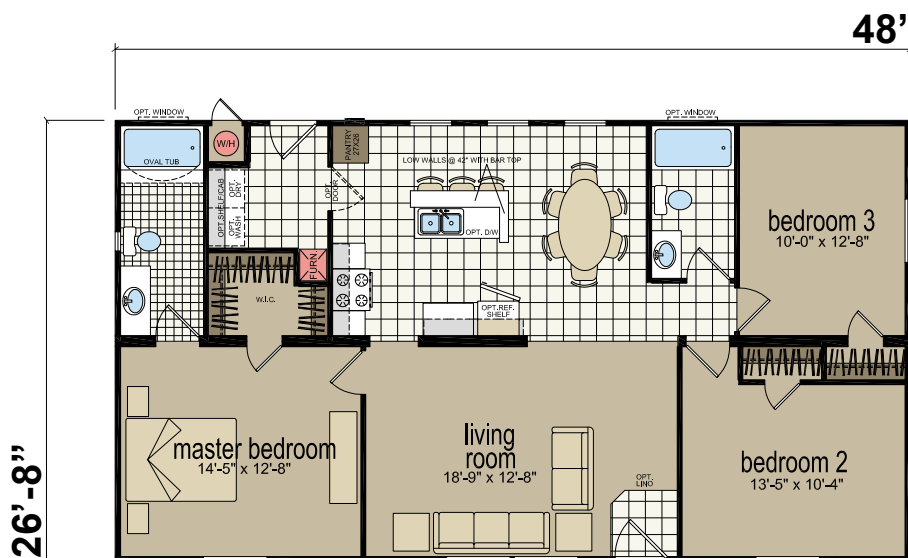
# 3603B

3 Bed-2Bath  
1400 SQ.FT.



# 4483B

3 Bed-2Bath  
1280 SQ.FT.

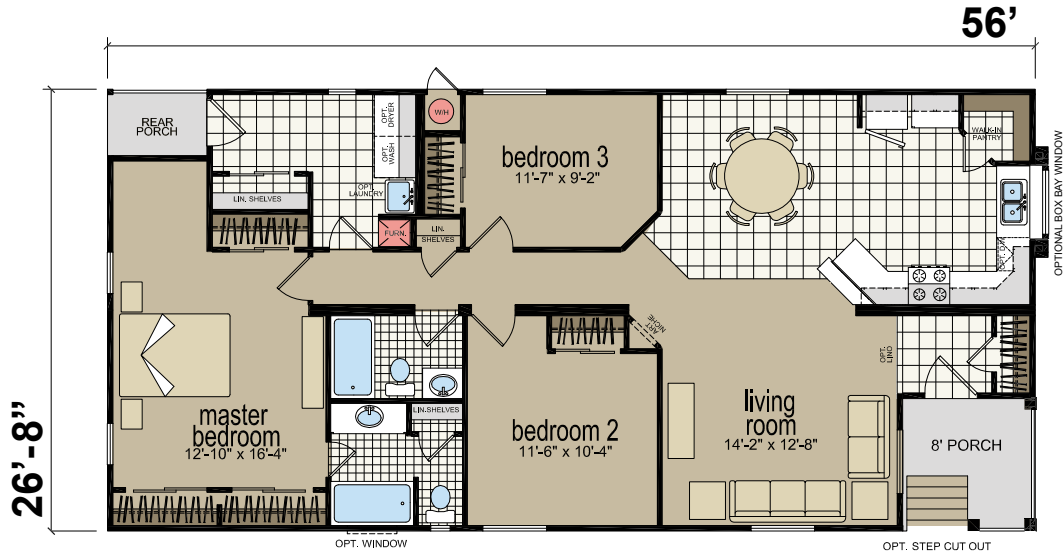


4563K

3 Bed-2 Bath  
1494 SQ.FT.

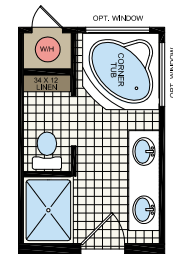
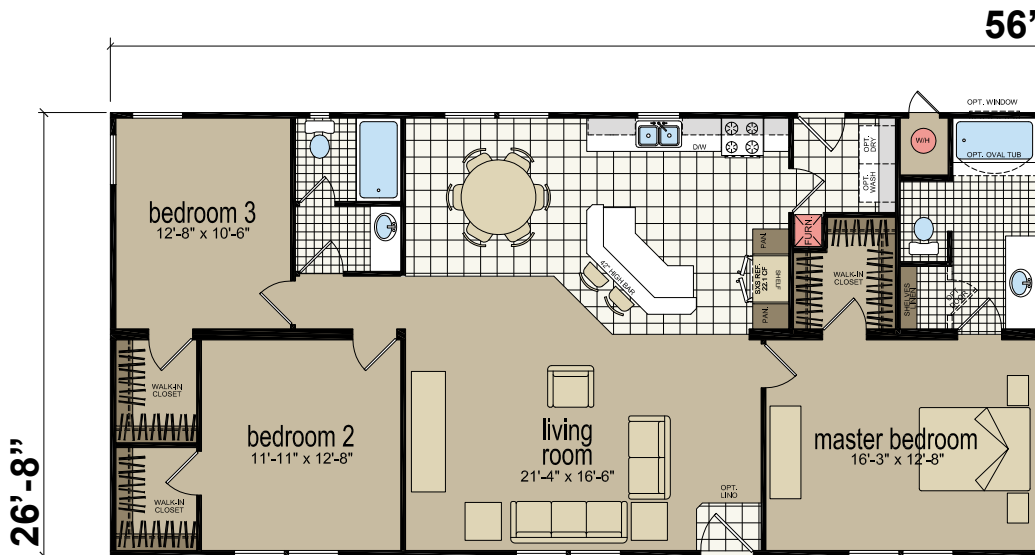


Optional Retreat & Laundry



4563M

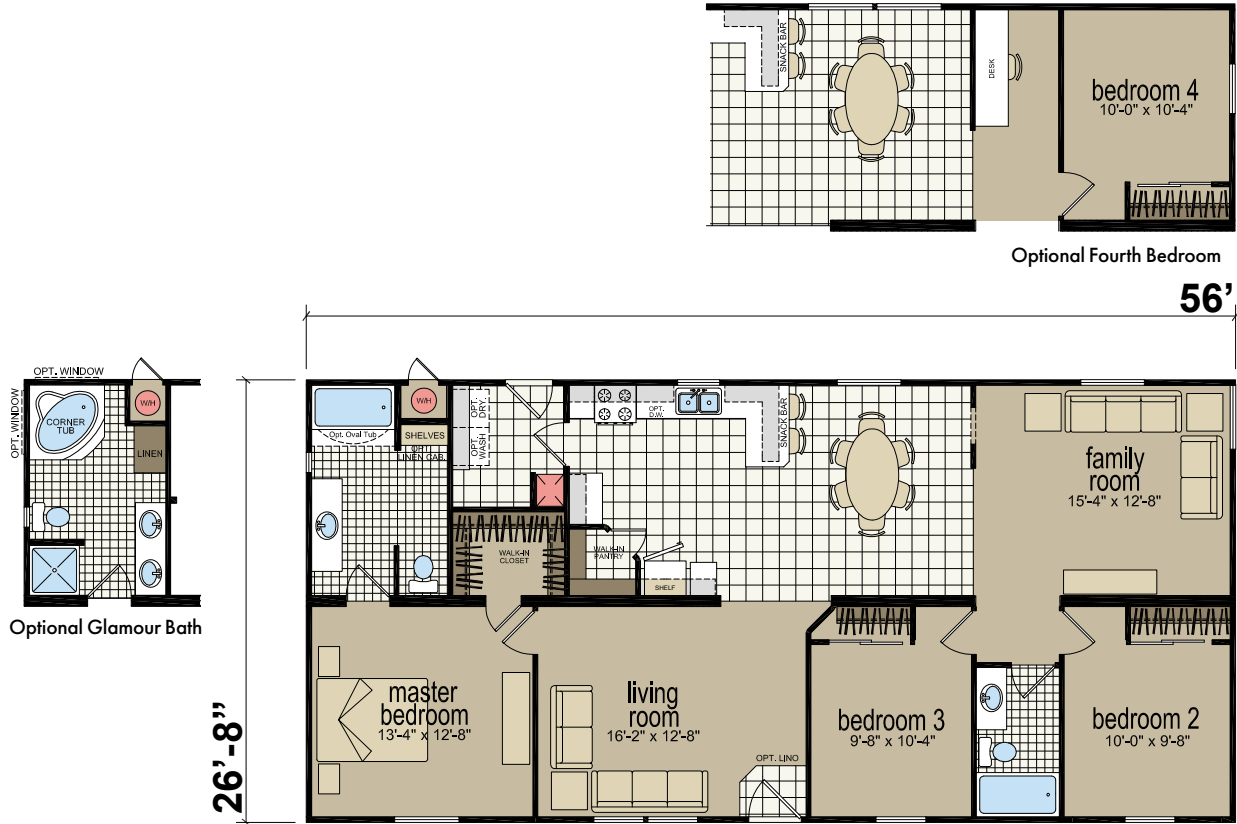
3 Bed-2 Bath  
1494 SQ.FT.



Optional Glamour Bath

4563S

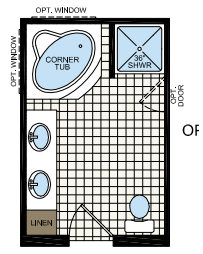
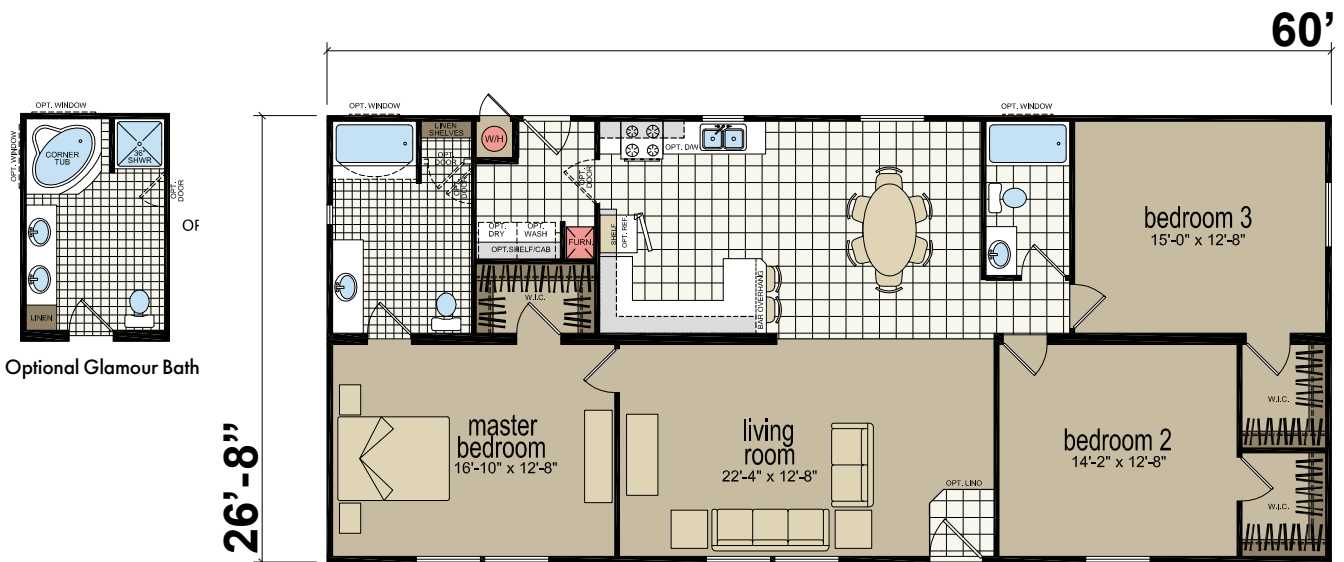
3 Bed-2 Bath  
1494 SQ.FT.



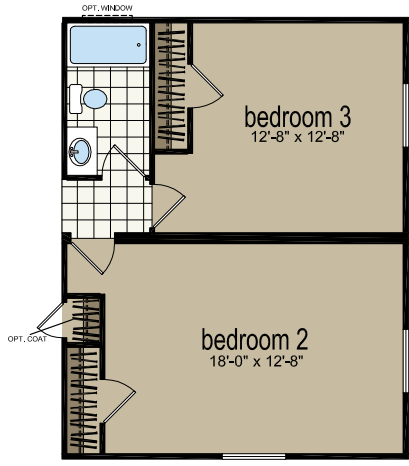


# 4603B

3 Bed-2 Bath  
1600 SQ.FT.



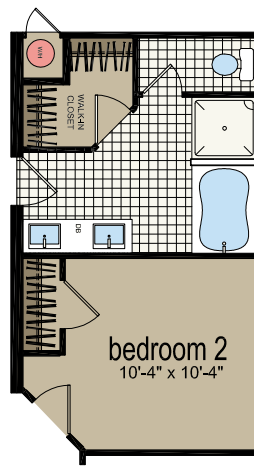
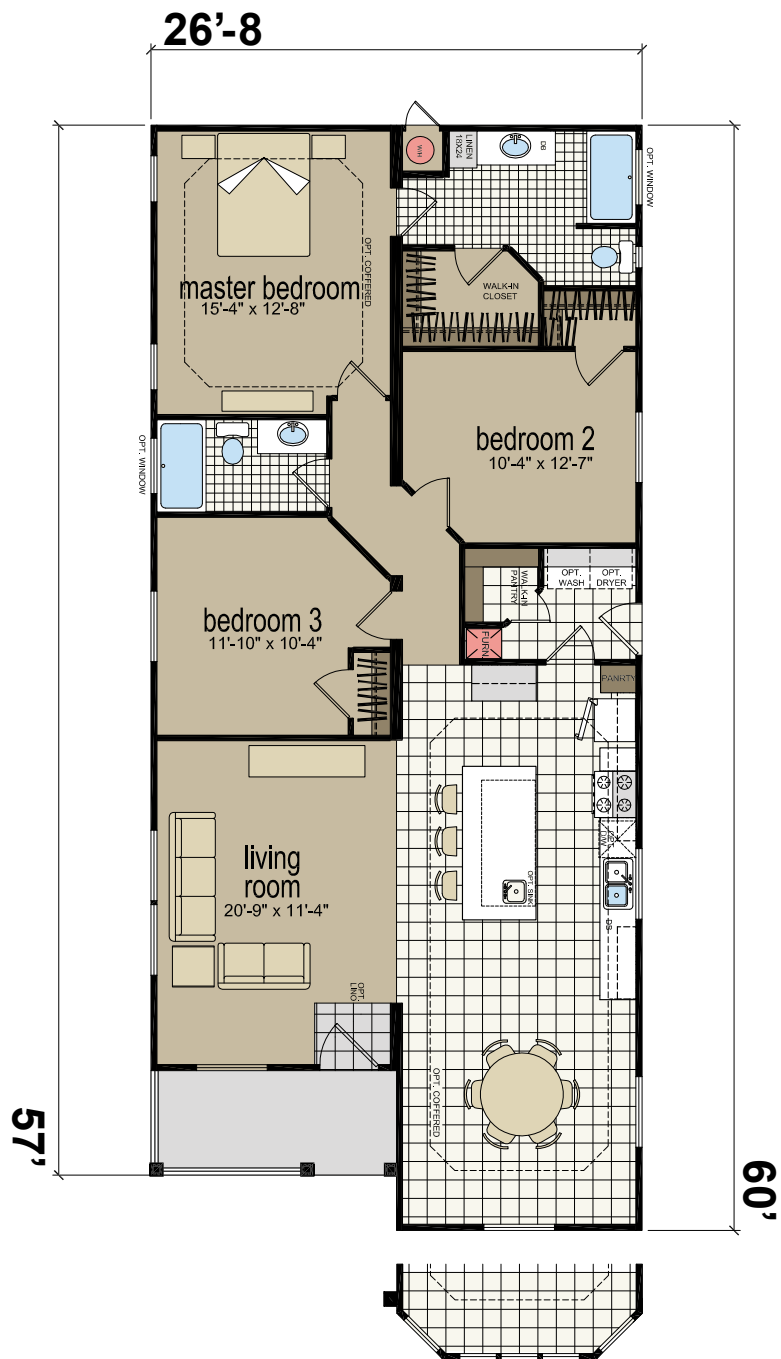
Optional Glamour Bath



Optional Bedroom Closet Configuration

# 4603D

3 Bed-2 Bath  
1485 SQ.FT.



Optional Master Bath

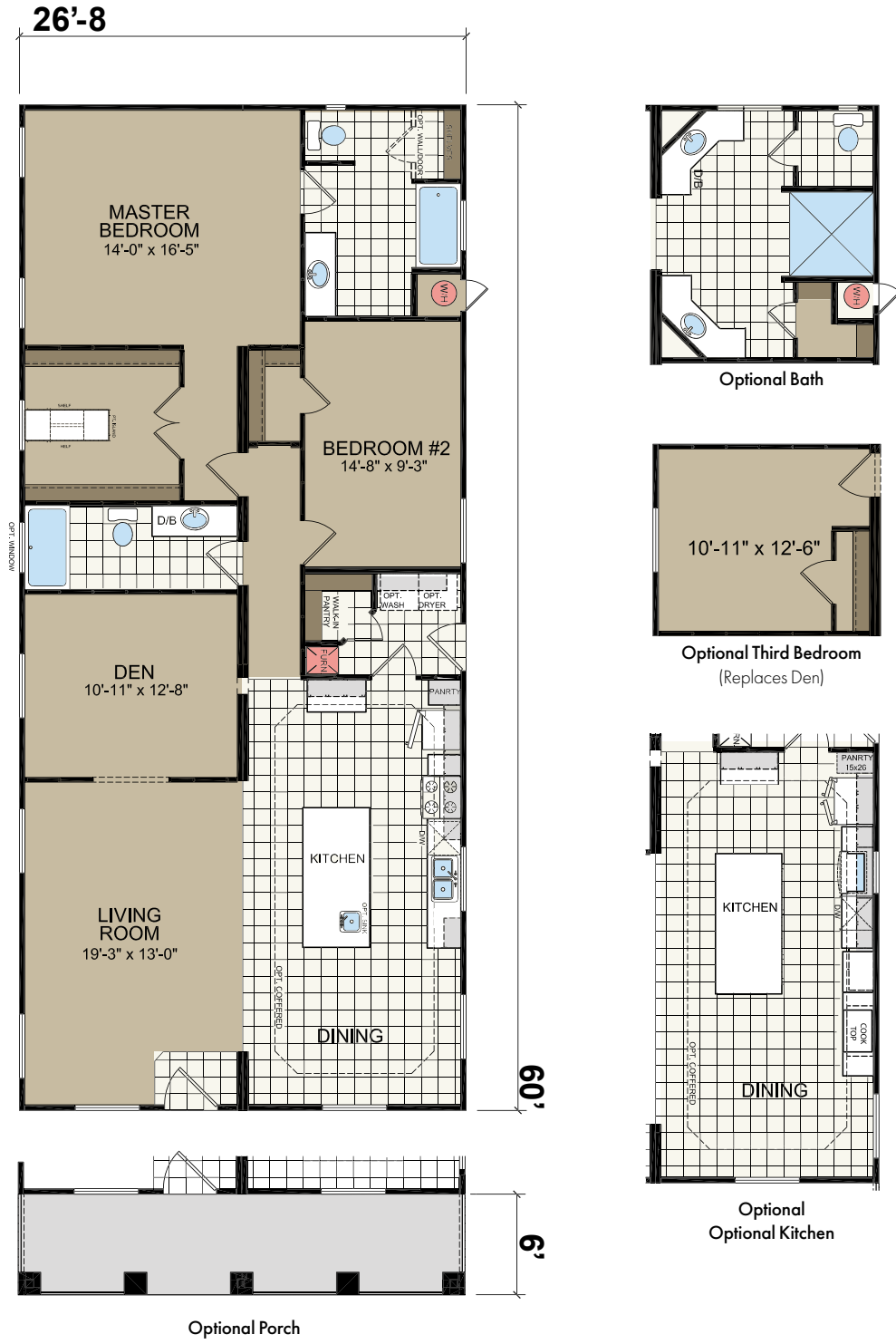
Optional Walk-a-Bay



Shown with Optional Exterior

# 4602S

2 Bed-2 Bath  
1600 SQ.FT.



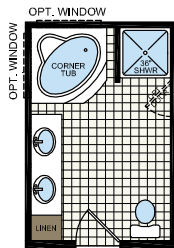


Shown with Optional Exterior

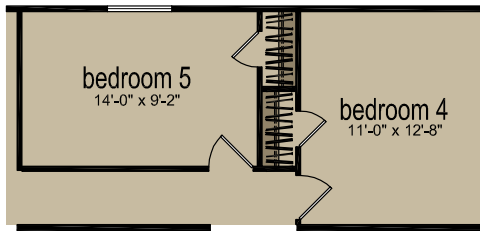


# 4663A

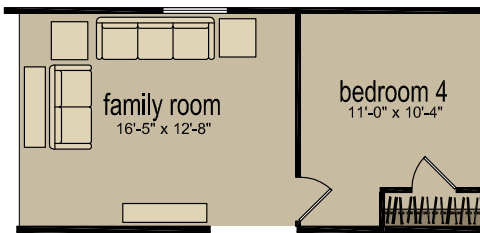
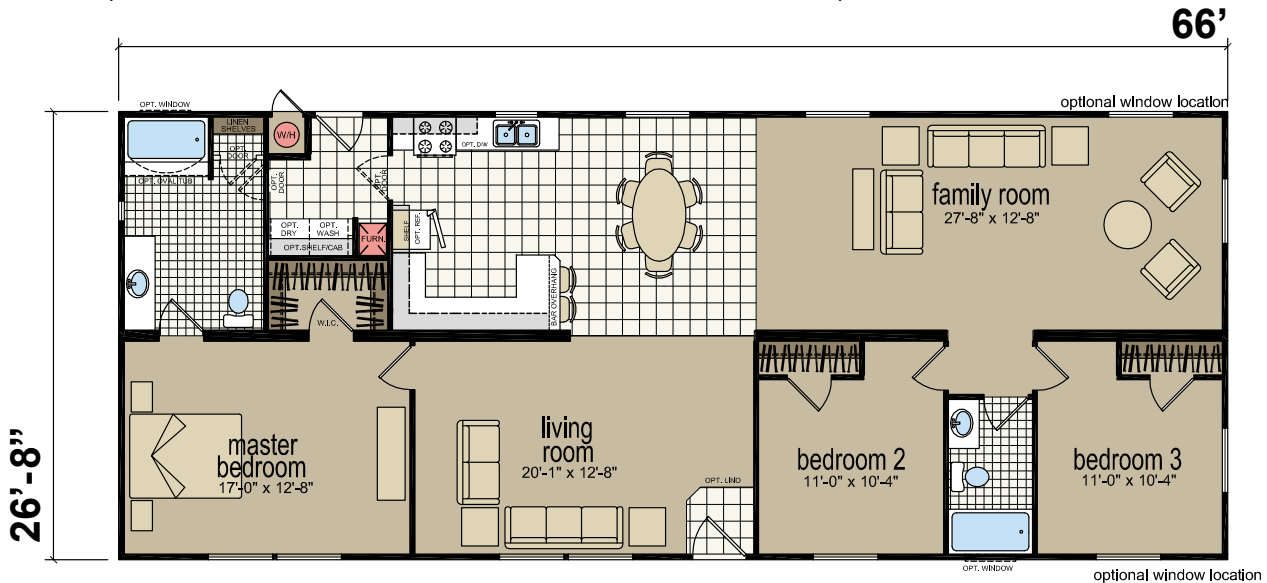
3 Bed-2 Bath  
1760 SQ.FT.



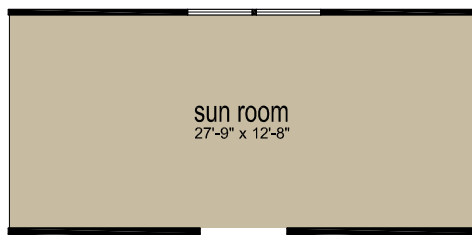
Optional Glamour Bath



Optional Fourth & Fifth Bedroom



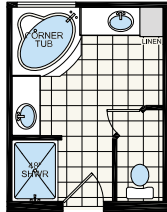
Optional Fourth Bedroom



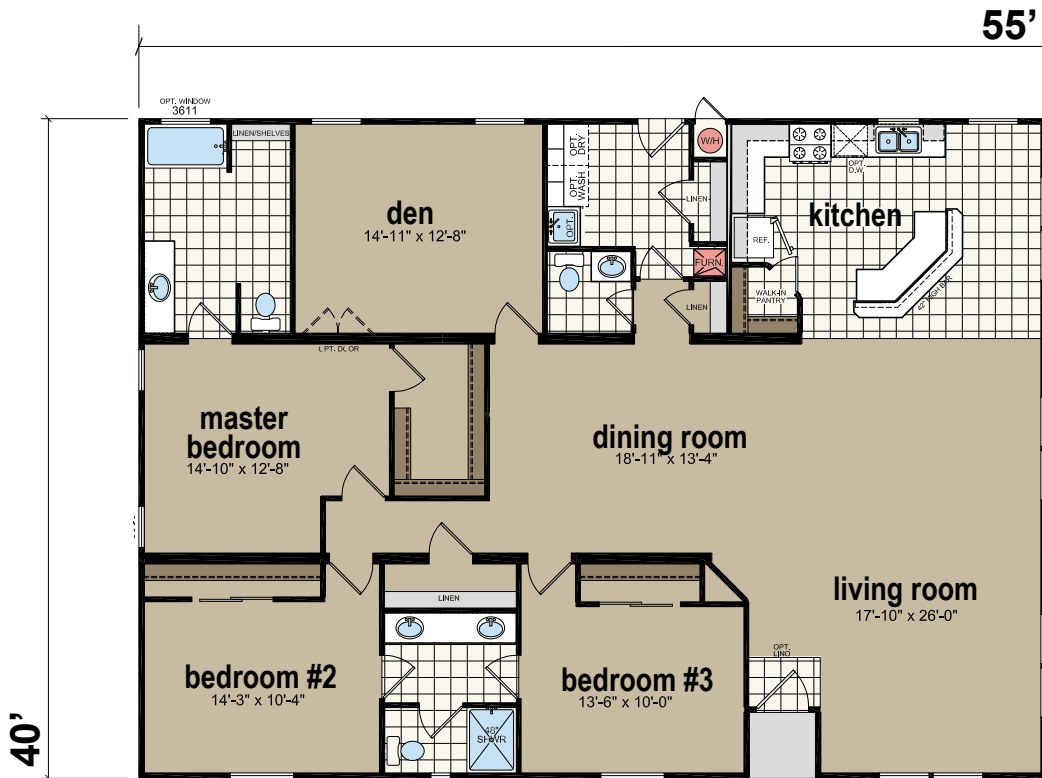
Optional Sun Room

7553K

3 Bed-2 Bath  
2000 SQ. FT.

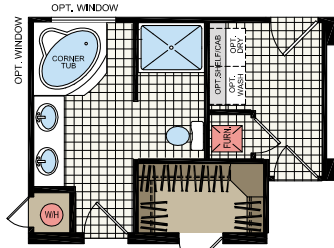


Optional Glamour Bath

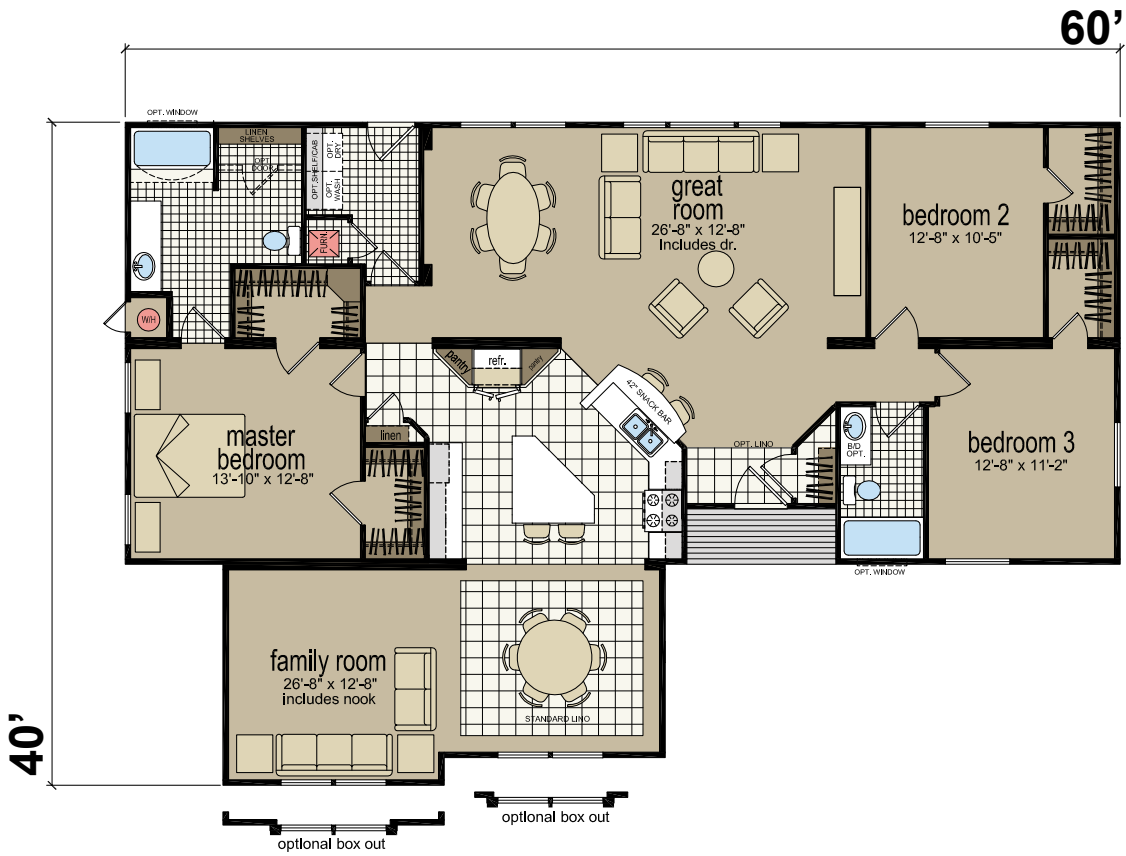


# 7623U

3 Bed-2 Bath  
1904 SQ. FT.



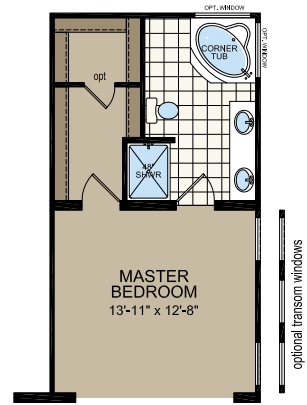
Optional Glamour Bath



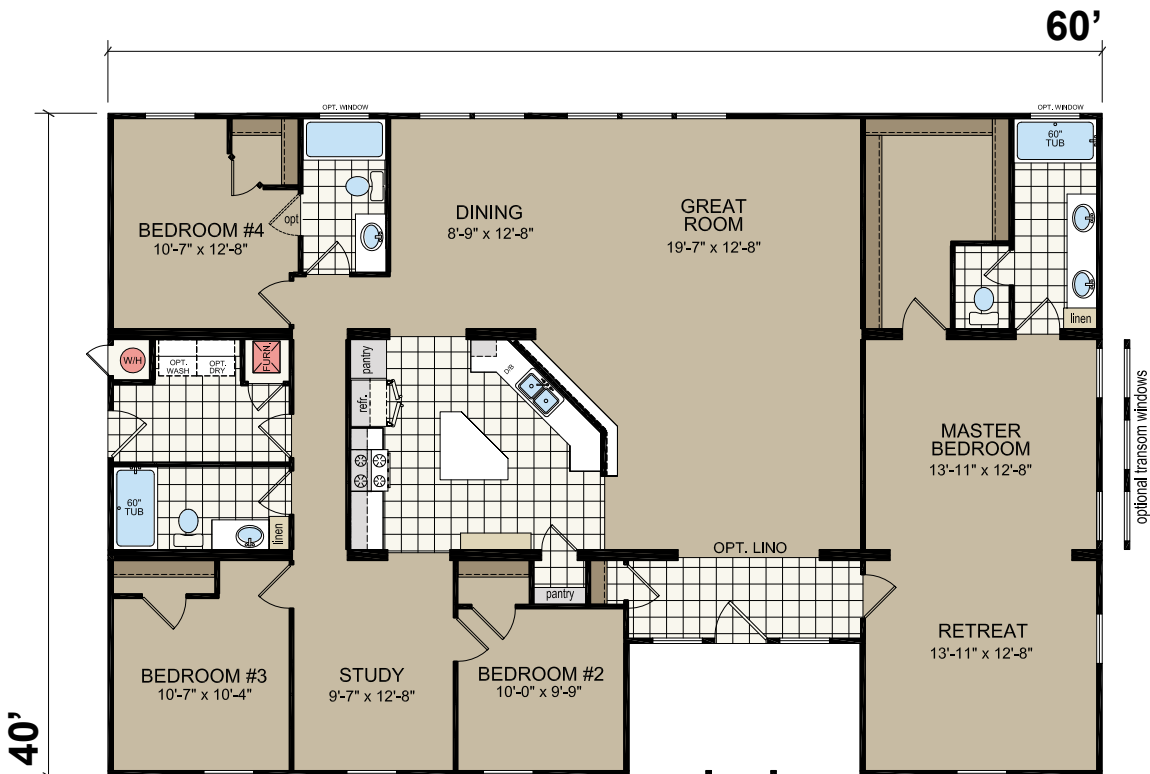


# 7604B

4 Bed-3 Bath  
2289 SQ. FT.



Optional Glamour Bath





## STANDARD FEATURES

# CREEKSIDE MANOR

### Construction

- 8' Flat Ceiling Throughout
- 12" Eaves Hitch End Only
- 20 lb. Roof Load
- 2x4 Exterior Walls
- 2x6 Floor Joists — 16" On Center
- 3/12 Roof Pitch
- 5/8" Tongue & Groove Floor Decking
- 6" Eaves Sides & Rear – 28' & 40' Wides Only
- Nominal Eaves Sides & Rear – All Except 28' & 40' Wides
- R-11 Floor Insulation
- R-13 Wall Insulation
- R-22 Ceiling Insulation

### Exterior

- 32" In-swing 9-Lite Rear Door
- 36" In-swing Steel Front Door
- 4" Cement Window Trim Throughout
- Cement Fascia
- Cement Perforated Soffit
- Cement Vertical Siding
- Architectural Shingles
- Low-E Dual Glaze Windows Throughout
- Standard Front & Rear Porch Lights
- 11x36 Slider Window in Guest Bath

### Plumbing/Heating/ Electrical/Utility

- 100 Amp Electrical Service
- 40-Gallon Gas Water Heater
- Carbon Monoxide & Smoke Detectors
- Cement Water Heater Door with Hinges
- Exterior GFI Receptacle
- Gas Forced Air Furnace
- Shut-Off Valves Throughout
- LED Can Lights Throughout
- Wood Shelf Over Washer & Dryer
- Wire & Vent for Electric Dryer & Gas

### Interior

- 6 lb. Rebond Carpet Pad
- 3" Baseboard Molding
- 6-Panel Interior Doors
- Brushed Nickel Lighting & Hardware Throughout
- Carpet in Closets Throughout
- Linoleum in Kitchen, Dining, Baths & Utility
- Windstone
- 2" Fauxwood Blinds
- Tape & Texture Throughout with Square Corners
- Wood Shelving Throughout
- White 2-1/4" Door Case Molding
- Soft Close Guides / Hinges (Standard for Hardwood Only)

### Kitchen

- (5) Can Lights
- Granite Counters with Single Eased Edge
- 4" Granite Backsplash
- Stainless Steel Under-Mount Sink
- Lined Overhead Cabinets
- Pull-Out Spout Faucet
- Bank of Drawers
- MDF Cabinet Doors
- Deluxe Cabinet Molding
- Cabinet Above Refrigerator
- Finish Off Under Base Cabinets
- Toe-Kick Registers
- 18 Cu. Ft. Frost Free Refrigerator
- 30" Vented Range Hood with Light
- Deluxe Gas Range
- Garbage Disposal

### Baths

- Granite Counters with Single Eased Edge
- 4" Granite Backsplash
- Under-Mount Bath Sinks
- Brushed Nickel Faucets & Hardware
- Glamour Surround Tub/Shower
- Medicine Cabinets
- Finish Off Base Cabinets
- Toe-Kick Registers
- Bank of Drawers – Primary Bathroom
- Lighting Over Bath Mirrors

## UPGRADE PACKAGES

### MEADOWVIEW ESTATES PACKAGE

(Includes Creekside Manor Standards)

- Adjustable Overhead Shelves
- Deluxe Dining Room Chandelier
- Deluxe Front Porch Light
- Deluxe Window Trim – Hitch & Front Door Side
- High Rise Elongated Toilets
- Hardwood Cabinet Doors
- Satin Nickel Lever Passage Door Handles
- Satin Nickel Single-Lever Faucets Throughout
- Wood Trim Around Bath Mirrors

### NAPA ESTATES PACKAGE

(Includes Meadowview Estates Package)

- 9' Flat Ceiling Throughout
- 11x36 Slider Window in Primary
- 42" Overhead Cabinets
- 80" Windows Throughout
- 46x58 Stack Kitchen Window – Where Applicable
- Cabinet Over Washer & Dryer
- Craftsman Window Trim – Hitch & Front Door Side
- Raindance / Broad Creek Carpet



Due to continuous product development and improvement, prices, specifications and material are subject to change without notice or obligation. Square footage and other dimensions are approximate. Included images are artist renderings and are not intended to be an accurate representation of the homes. Renderings and Floor Plans may be shown with optional features and/or third party additions that may not be available in all regions or situations. Exterior Renderings may include onsite builder built options not offered by Champion Home Builders, Inc.



840 Palm Ave, Lindsay, CA 93247

[www.redmanhomesca.com](http://www.redmanhomesca.com)

