

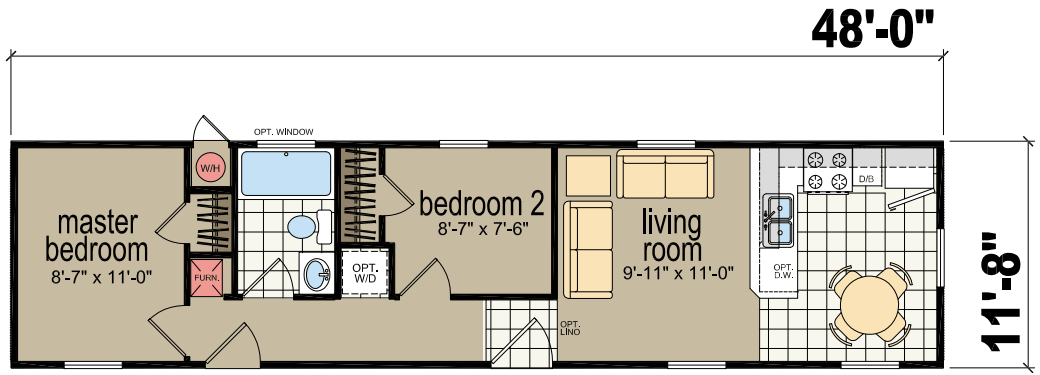


SINGLE-SECTION HOMES

MODELS AVAILABLE IN CREEKSIDE MANOR,
MEADOWVIEW ESTATES OR NAPA ESTATES PACKAGES.

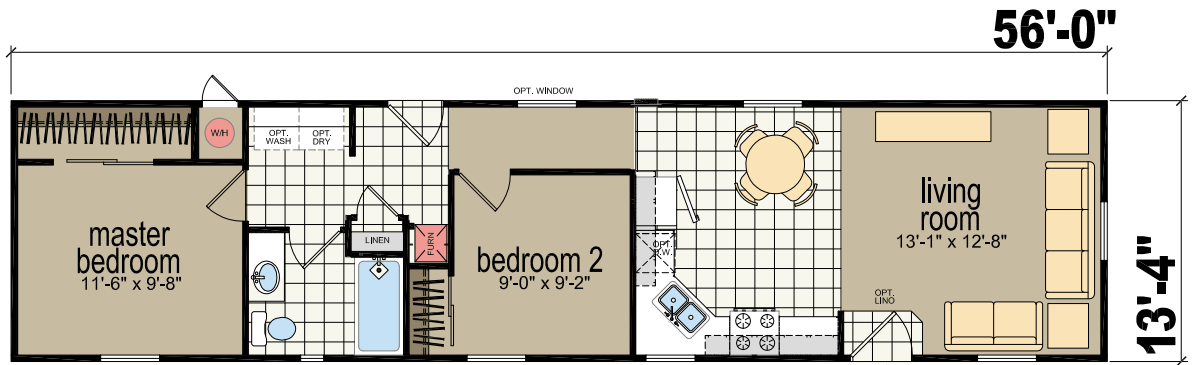
REDMAN  HOMES®

**MODEL
1482D**

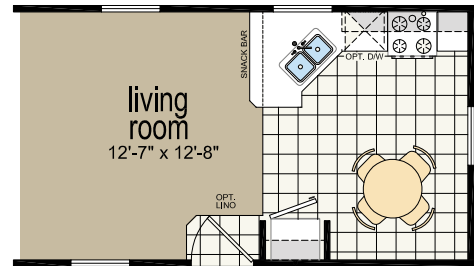


2 BED- 1 BATH | 560 SQ.FT.

**MODEL
2562L**

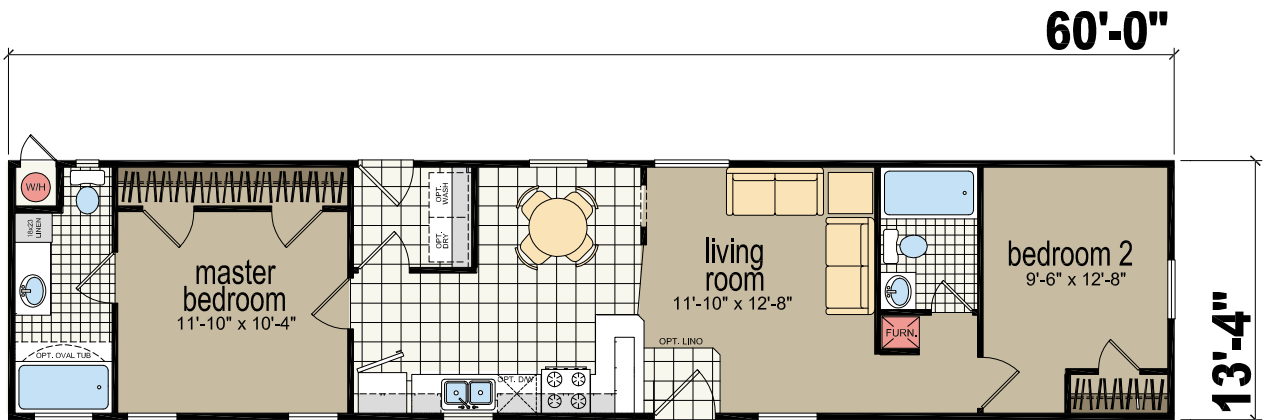


2 BED- 1 BATH | 747 SQ.FT.



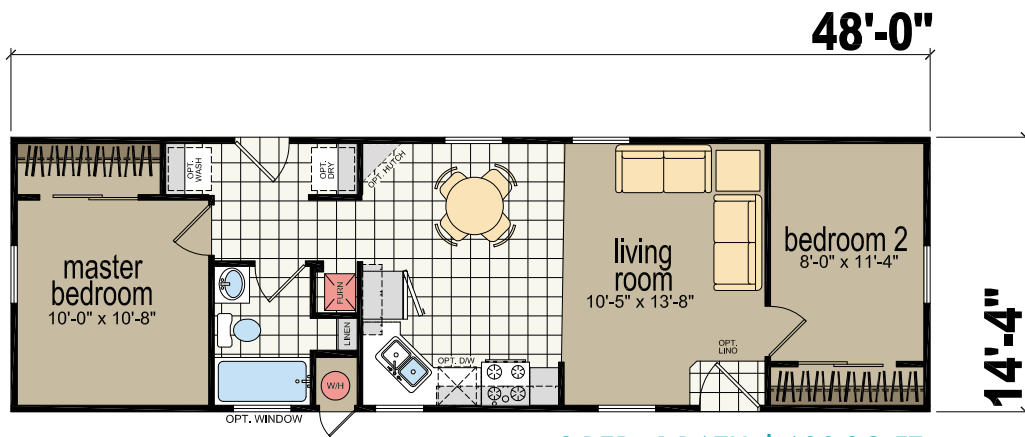
09-CM-2562L. OPTIONAL KITCHEN

**MODEL
2602B**

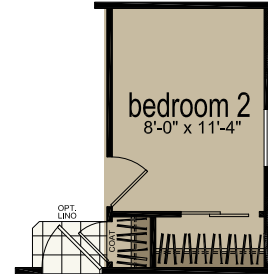


2 BED- 2 BATH | 800 SQ.FT.

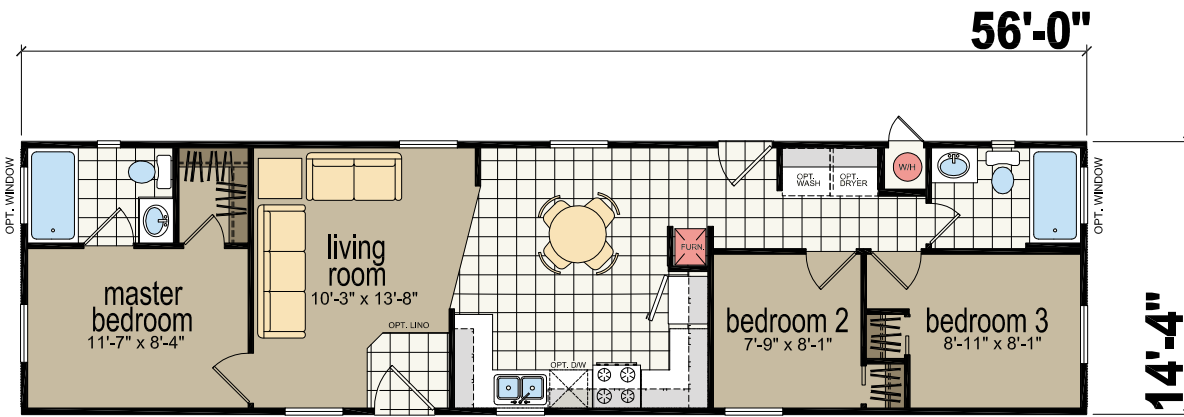
MODEL
6482B



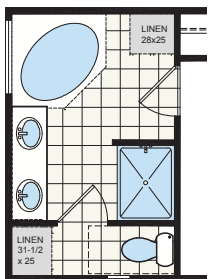
2 BED- 1 BATH | 688 SQ.FT.



MODEL
6563B

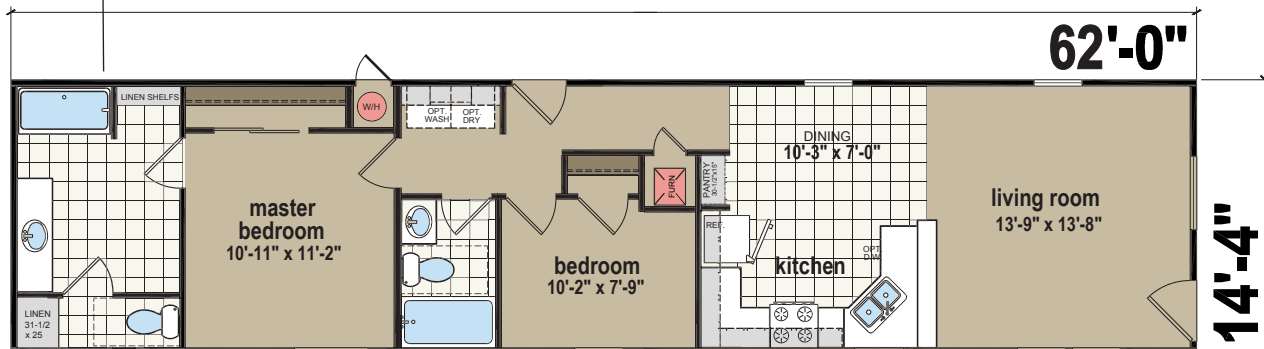


3 BED- 2 BATH | 803 SQ.FT.



OPT. BATH

MODEL
6622L



3 BED- 2 BATH | 889 SQ.FT.

CONSTRUCTION

- 8' Flat Ceiling Throughout
- 12" Eaves Hitch End Only
- 20 lb. Roof Load
- 2x4 Exterior Walls
- 2x6 Floor Joists — 16" On Center
- 3/12 Roof Pitch
- 5/8" Tongue & Groove Floor Decking
- Nominal Eaves Sides & Rear
- R-11 Floor Insulation
- R-13 Wall Insulation
- R-22 Ceiling Insulation

EXTERIOR

- 32" In-swing 9-Light Rear Door
- 36" In-swing Front Door
- 4" Cemplank® Window Trim
- Cement Facia
- Cement Perforated Soffit
- Cement Vertical Siding
- Architectural Shingles
- Low-E Dual Glaze Windows Throughout
- Shutters Hitch & Front Door Side
- Standard Front & Rear Porch Lights

PLUMBING/HEATING/ ELECTRICAL/UTILITY

- 100 AMP Electrical Service
- 30-Gallon Electric Water Heater
- Carbon Monoxide & Smoke Detectors
- Cement Water Heater Door with Hinges
- Exterior GFI Receptacle
- Gas Forced Air Furnace
- Shut-Off Valves Throughout
- Wood Rod and Shelves Over Washer & Dryer
- Wire & Vent for Electric Dryer
- LED Can Lights Throughout

INTERIOR

- 6 lb. Rebond Carpet Pad
- 6-Panel Interior Doors
- Brushed Nickel Lighting & Hardware Throughout
- Carpet in Closets Throughout
- Linoleum – Entry, Kitchen, Dining, Baths & Utility
- Simply Stated Carpet
- Tape and Texture Throughout with Rounded Corners
- 2-1/4" White Door Case Molding
- Wood Rod and Shelving Throughout
- Faux Wood Blinds Throughout
- 3" Baseboard Throughout

KITCHEN

- Granite Counters with Single Eased Edge
- 4" Granite Backsplash
- Stainless Steel Under-Mount Sink
- Lined Overhead Cabinets
- Pull-Out Spout Faucet
- Bank of Drawers
- MDF Cabinet Doors
- Finish Off Under Base Cabinets
- Toe-Kick Registers
- Cabinet Over Refrigerator
- Deluxe Cabinet Molding
- 18 Cu. Ft. Frost Free Refrigerator
- 30" Vented Range Hood with Light
- Deluxe Gas Range

BATHS

- Granite Counters with Single-Eased Edge
- 4" Granite Backsplash
- 1-Piece Fiberglass Tub/Shower
- Under-Mount Bath Sinks
- Brushed Nickel Faucets & Hardware
- Finish Off Under Base Cabinets
- Bank of Drawers – Master Bathroom
- Medicine Cabinets
- Toe-Kick Registers

© 2021 Champion Home Builders, Inc. All Rights Reserved.

UPGRADE PACKAGES

MEADOWVIEW ESTATES PACKAGE

(INCLUDES CREEKSIDE MANOR STANDARDS)

- 40-Gallon Gas Water Heater
- (5) Recessed Can Lights in Kitchen
- Adjustable Overhead Shelves
- Deluxe Window Trim – Hitch and Front Door Side
- Deluxe Dining Room Chandelier
- Deluxe Front Porch Light
- Elongated High-Rise Toilets
- Hardwood Cabinet Doors
- Lighting Over Bathroom Mirrors
- Satin Nickel Lever Passage Door Handles
- Satin Nickel Single-Lever Faucets Throughout
- Wood Trim Around Bath Mirrors

NAPA ESTATES PACKAGE

(INCLUDES MEADOWVIEW ESTATES STANDARDS)

- 9' Flat Ceiling Throughout
- 11x36 Slider Window in Master & Guest Bathrooms
- 46x58 Stacked Window in Kitchen – Where Applicable
- 42" Overhead Cabinets
- 80" Windows Throughout
- Cabinet Over Washer & Dryer with Wood Rod & Shelf
- Craftsman Window Trim – Hitch & Front Door Side
- Macrame Carpet

REDMAN  HOMES.

CHAMPION®
HOME BUILDERS